



WICKSHIRE WEST APARTMENTS

From the moment you first visit Wickshire West Apartments, you will appreciate the spacious one and two-bedroom floor plans which feature full-size washer and dryer in each apartment, beautiful wood plank flooring or warm, neutral carpet, efficient stainless steel or GE kitchen appliances, walk-in or double closets, large patio/balcony and additional storage. Located just around the bend from public transit, Highway 16, and I-5 Freeway you will appreciate the Wickshire West's convenient location. Enjoy nearby Snake Lake Nature Center, Cheney Stadium, and the Tacoma Firs golf course. Wickshire West is more than a home; it is a community of friends, offering a maintenance-free and worry-free lifestyle for active seniors 55+ years young.



1035 S Whitman Street • Tacoma, WA 98465

253.565.0665 • 253.472.RENT

wickshire@dmcimail.com

Ask about
our referral
program!

Professionally managed by
DMCI Dobler
Management
COMPANY, INC.



Pet Friendly

Proud Participant
**SMOKE-FREE
HOUSING**
PIERCE COUNTY



Equal Housing
Opportunity



Apartment Interior Features:

- Full-Size Washer and Dryer
- Separate Dining Area with Ceiling Fan
- Patio or Balcony with Private Storage
- Extra Large One and Two Bedroom Floor Plans

Apartment Community Features:

- 55 and Older Community
- Community Firepit, Courtyard, Barbeque, and Dining Area
- Close Proximity to Tacoma Community College, and Morgan Family YMCA
- Parking Lot and Off-Street Parking Available

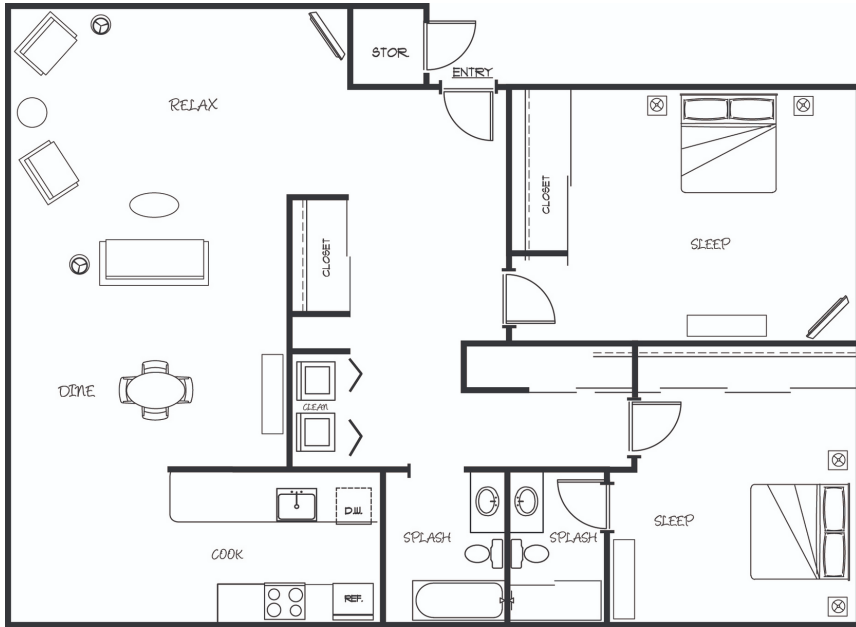




WICKSHIRE WEST APARTMENTS

Standard 2 Bedroom

Starting at \$ _____
_____ Square Feet

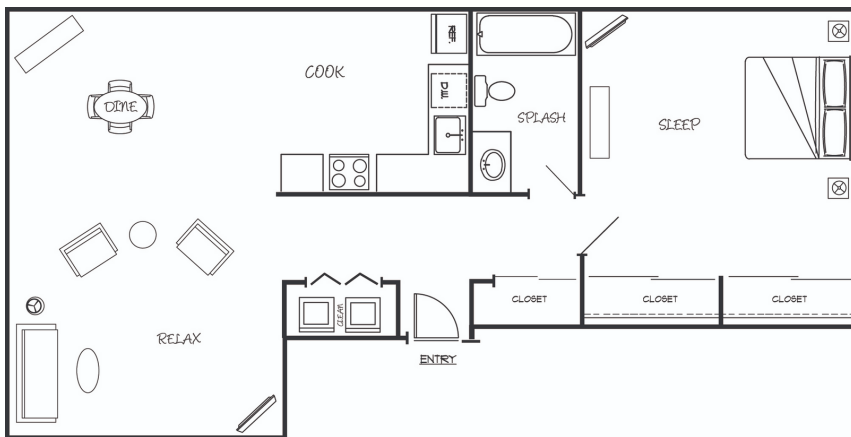


Driving Directions:

From I-5, take WA-16 West to the S Orchard Street exit in Tacoma. Take Exit 2B from WA-16 West, then take S 12th Street to S Whitman. Wickshire West is on S Whitman between S 10th & S 12th Street.

Standard 1 Bedroom

Starting at \$ _____
_____ Square Feet



Scan to Visit our Website!



WE PAY \$350 FOR RESIDENT REFERRALS
AND \$250 FOR NON-RESIDENT
REFERRALS!

The rent, features, plans, specifications, promotions, incentives, and available locations are subject to restrictions and subject to change without notice. Additional fees, deposits, and lease lengths may be required. Early termination of leases can and will be subject to penalties and/or forfeiture of deposits and discounts. Stated dimensions and maps are approximate and should not be used as a representation of any precise or actual size, location, or orientation and not all features and views are available in all units. Any photographs or illustrations used reflect artists' conceptions and are for illustrative purposes only. Photographs or renderings of people do not depict or indicate any preference regarding race, religion, gender, sexual orientation, disability, familial status, or national origin.

Professionally managed by
DMCI Dobler
Management
COMPANY, INC.

Proud Participant
**SMOKE-FREE
HOUSING**
PIERCE COUNTY

